

# AM.5.UP... MODULAR

## PILOT OPERATED CHECK VALVES CETOP 5



AM.5.UP...

SCREWS AND STUDS

CH. IV PAGE 35

AM5UP type modular check valves allow free flow in one direction by lifting a conical steel seated poppet, while in the opposite direction the fluid can return by means of a small piston piloted by the other line pressure (piloted side).

The cast valve body allows limited pressure drops during the fluid flow through the various P/A/B/T lines.

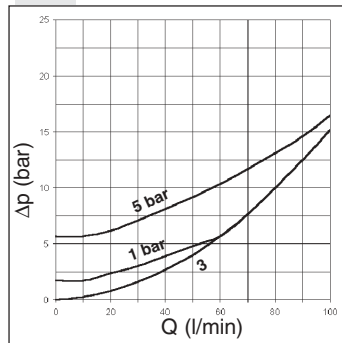
They are available on single A or B lines, and on double A and B lines (see hydraulic symbols).

Max. operating pressure	280 bar
Minimum opening pressure spring 1	1 bar
Minimum opening pressure spring 5	5 bar
Piloting ratio	1 : 14,3
Max. flow	80 l/min
Hydraulic fluids	Mineral oils DIN 51524
Fluid viscosity	10 ÷ 500 mm <sup>2</sup> /s
Fluid temperature	-25°C ÷ 75°C
Ambient temperature	-25°C ÷ 60°C
Max. contamination level	class 10 in accordance with NAS 1638 with filter $\beta_{25} \geq 75$
Weight	2,7 Kg

### ORDERING CODE

<b>AM</b>	Modular valve
<b>5</b>	CETOP 5/NG10
<b>UP</b>	Piloted check valve
<b>**</b>	Control on lines <b>A / B / AB</b>
<b>*</b>	Minimum opening pressure <b>1</b> = 1 bar <b>5</b> = 5 bar
<b>**</b>	<b>00</b> = No variant <b>V1</b> = Viton
<b>5</b>	Serial No.

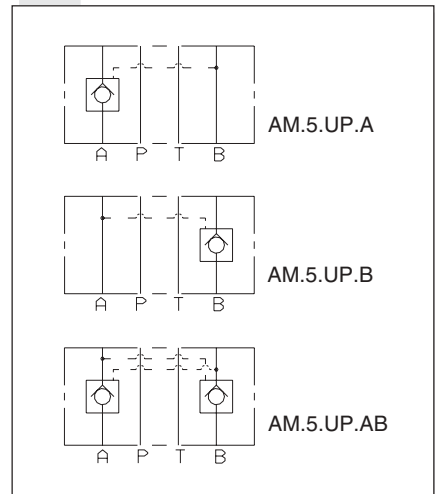
### PRESSURE DROPS



Curve n. 3 = Piloted side flow

The fluid used is a mineral oil with a viscosity of 46 mm<sup>2</sup>/s at 40°C. The tests have been carried out at a fluid temperature of 50°C.

### HYDRAULIC SYMBOLS



### OVERALL DIMENSIONS

