



CMP.20...

## CMP.20... DIRECT OPERATION MAXIMUM PRESSURE VALVES



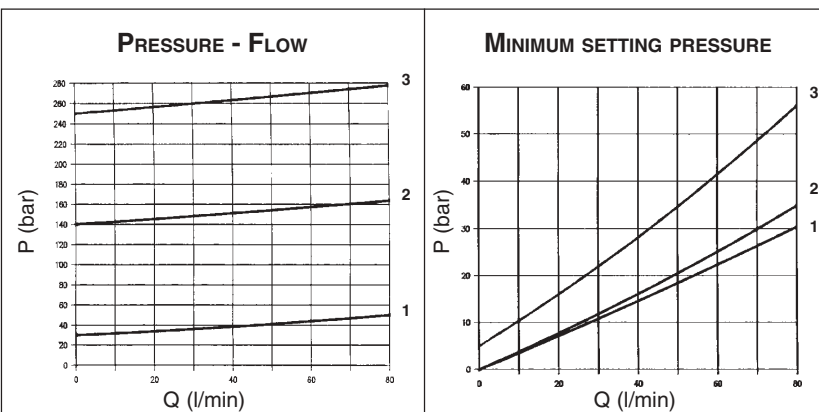
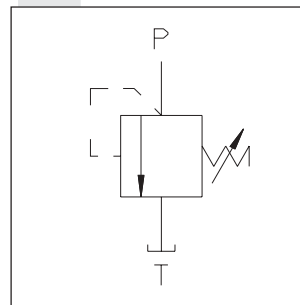
Direct action pressure relief valves type CMP.20 are used to limit the maximum system pressure within their adjustable range (see diagram).

Max. operating pressure	250 bar
Setting ranges:	Spring 1 max. 30 bar
	Spring 2 max. 140 bar
	Spring 3 max. 250 bar
Max. flow	80 l/min
Hydraulic fluids	Mineral oils DIN 51524
Fluid viscosity	10 ÷ 500 mm <sup>2</sup> /s
Fluid temperature	-25°C ÷ 75°C
Ambient temperature	-25°C ÷ 60°C
Max. contamination level	class 10 in accordance with NAS 1638 with filter $\beta_{25} \geq 75$
Weight	0,5 Kg
Tightening torque	80 ÷ 90 Nm (8 ÷ 9 Kgm)
• The minimum permissible setting pressure depending on the spring: see curves below	

### ORDERING CODE

<b>CMP</b>	Max. pressure cartridge valve
<b>20</b>	Size
<b>*</b>	Type of adjustment <b>M</b> = Plastic knob <b>C</b> = Grub screw <b>V</b> = Handwheel
<b>*</b>	Setting ranges <b>1</b> = max. 30 bar (white spring) <b>2</b> = max. 140 bar (yellow spring) <b>3</b> = max. 250 bar (green spring)
<b>**</b>	<b>00</b> = No variant <b>V1</b> = Viton
<b>2</b>	Serial No.

### HYDRAULIC SYMBOL



### OVERALL DIMENSIONS

