

# CMP.10... DIRECT OPERATION

## MAXIMUM PRESSURE VALVES



CMP.10...

These direct action valves offer 2 important operational safety features for the system in which they are used:

1) impossibility for the user to set pressure values higher than those specified in the catalogue by means of a mechanical stop (it is impossible to compress the spring completely)

2) Another internal mechanical stop prevents temporary closing of the P line because of peaks of pressure.

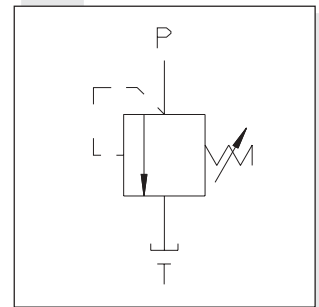
Max. operating pressure	320 bar
Setting ranges:	Spring 0 max. 30 bar
	Spring 1 max. 50 bar
	Spring 2 max. 150 bar
	Spring 3 max. 320 bar

Max. flow	40 l/min
Hydraulic fluids	Mineral oils DIN 51524
Fluid viscosity	10 ÷ 500 mm <sup>2</sup> /s
Fluid temperature	-25°C ÷ 75°C
Ambient temperature	-25°C ÷ 60°C
Max. contamination level	class 10 in accordance with NAS 1638 with filter β <sub>25</sub> ≥ 75
Weight	0,2 Kg
Tightening torque	60 ÷ 70 Nm (6 ÷ 7 Kgm)
• The minimum permissible setting pressure depending on the screw: see curves below	

### ORDERING CODE

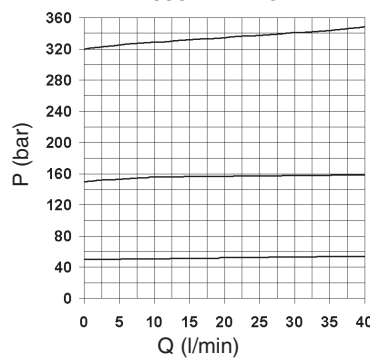
<b>CMP</b>	Max. pressure cartridge
<b>10</b>	Size
<b>*</b>	Type of adjustment M = Plastic knob C = Grub screw V = Handwheel
<b>*</b>	Setting ranges 0 = max. 30 bar (without colour) 1 = max. 50 bar (white spring) 2 = max. 150 bar (yellow spring) 3 = max. 320 bar (green spring)
<b>**</b>	00 = No variant V1 = Viton
<b>2</b>	Serial No.

### HYDRAULIC SYMBOL

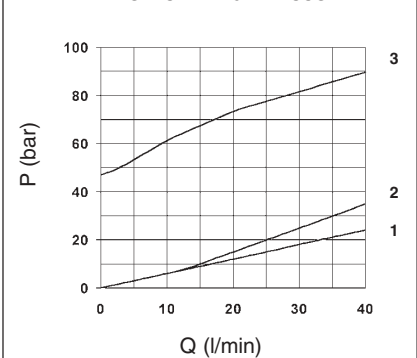


5

PRESSURE - FLOW



MINIMUM SETTING PRESSURE



### OVERALL DIMENSIONS

#### SEAT DIMENSIONS

Type of adjustment

**M** Plastic knob

**C** Grub screw

**V** Handwheel

Valve seat plug code **R78.30.0564**