

CMP.06... DIRECT OPERATION

MAXIMUM PRESSURE VALVES



CMP.06...

These direct action valves offer 2 important operational safety features for the system in which they are used:

- 1) impossibility for the user to set pressure values higher than those specified in the catalogue by means of a mechanical stop (it is impossible to compress the spring completely)
- 2) Another internal mechanical stop prevents temporary closing of the P line because of peacks of pressure.

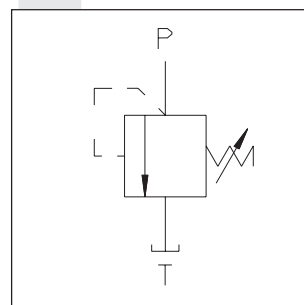
Max. operating pressure	290 bar	
Setting ranges	Spring 1	max. 30 bar
	Spring 2	max. 90 bar
	Spring 3	max. 290 bar
Max. flow	30 l/min	
Hydraulic fluids	Mineral oils DIN 51524	
Fluid viscosity	10 ÷ 500 mm ² /s	
Fluid temperature	-25°C ÷ 75°C	
Ambient temperature	-25°C ÷ 60°C	
Max. contamination level	class 10 in accordance with NAS 1638 with filter β ₂₅ ≥ 75	
Weight	0,17 Kg	
Tightening torque	30 ÷ 35 Nm (3.0 ÷ 3.5 Kgm)	

• The minimum permissible setting pressure depending on the spring: see curves below

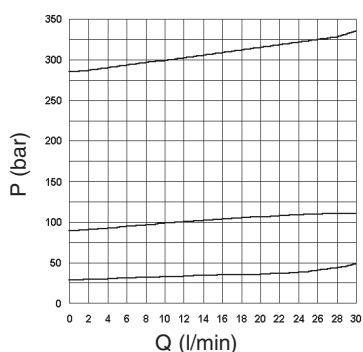
ORDERING CODE

CMP	Max. pressure cartridge
06	Size
*	Type of adjustment M = Plastic knob C = Grub screw V = Handwheel
*	Setting ranges 1 = max. 30 bar (white spring) 2 = max. 90 bar (yellow spring) 3 = max. 290 bar (green spring)
**	00 = No variant V1 = Viton
4	Serial No.

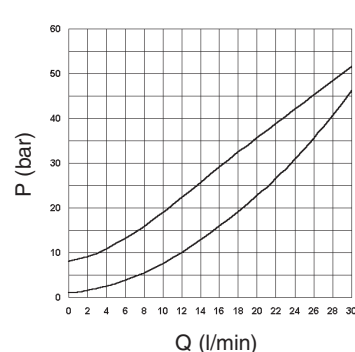
HYDRAULIC SYMBOL



PRESSURE - FLOW



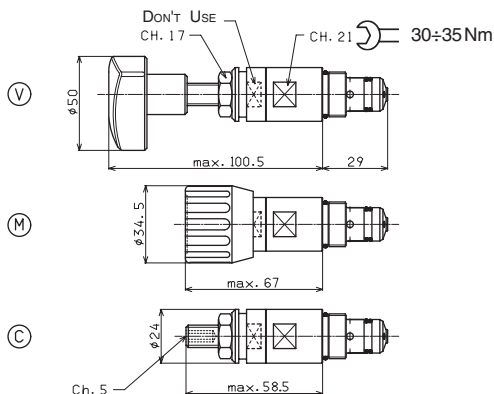
MINIMUM SETTING PRESSURE



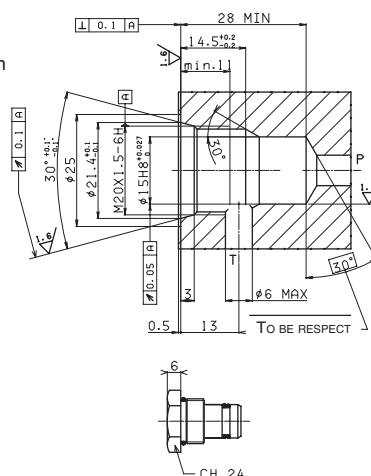
OVERALL DIMENSIONS

Type of adjustment

- M Plastic knob
- C Grub screw
- V Handwheel



SEAT DIMENSIONS



Attention! Tighten the valve using the seat like shown in picture.

Valve seat plug code **R78.30.0562**