

CMP.02... DIRECT OPERATION MAXIMUM PRESSURE VALVES



CMP.02...

These direct action valves offer 2 important operational safety features for system in which they are used:

- 1) impossibility for the user to set pressure values higher than those specified in the catalogue by means a mechanical stop (it can only be done with the standard screw and nut);
- 2) Another internal mechanical stop prevents temporary closing of the P line because of peacks of pressure.

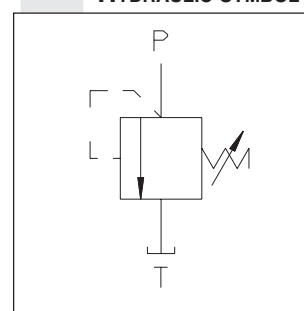
Max. operating pressure	250 bar	
Setting range:	Spring 1	max. 30 bar
	Spring 2	max. 90 bar
	Spring 3	max. 180 bar
	Spring 4	max. 250 bar
Max. flow	20 l/min	
Hydraulic fluids	Mineral oils DIN 51524	
Fluid viscosity	10 ÷ 500 mm ² /s	
Fluid temperature	-25°C ÷ 75°C	
Ambient temperature	-25°C ÷ 60°C	
Max. contamination level	class 10 in accordance with NAS 1638, with filter $\beta_{25} \geq 75$	
	Weight	0,1 Kg
Tightening torque	(see overall dimensions)	

• The minimum permissible setting pressure depending on the spring: see curves below

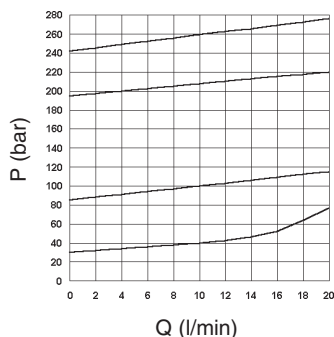
ORDERING CODE

CMP	Max. pressure cartridge
02	Size
C	Type of adjustment Grub screw
*	Setting ranges 1 = max. 30 bar (white spring) 2 = max. 90 bar (yellow spring) 3 = max. 180 bar (green spring) 4 = max. 250 bar (orange spring)
**	00 = No variant V1 = Viton
1	Serial No.

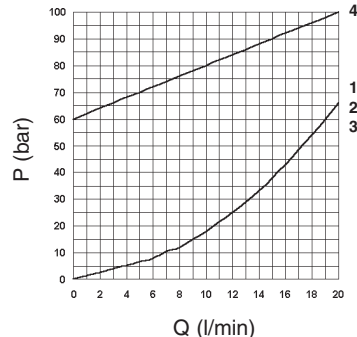
HYDRAULIC SYMBOL



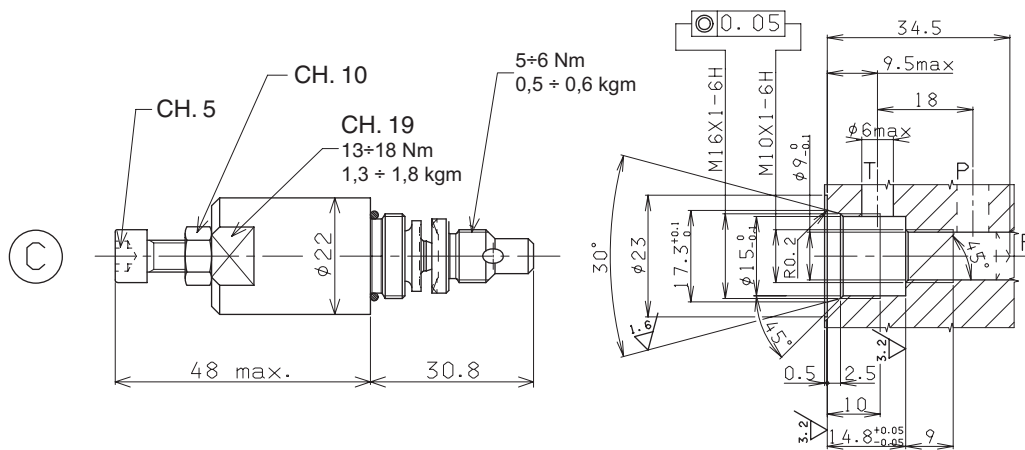
PRESSURE - FLOW



MINIMUM SETTING PRESSURE



OVERALL DIMENSIONS



SEAT DIMENSIONS

Type of adjustment

C Grub screw