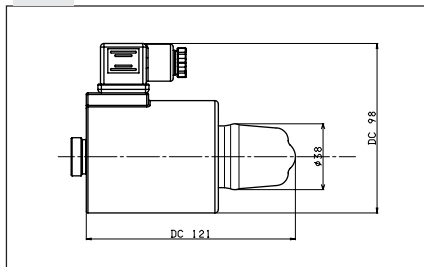




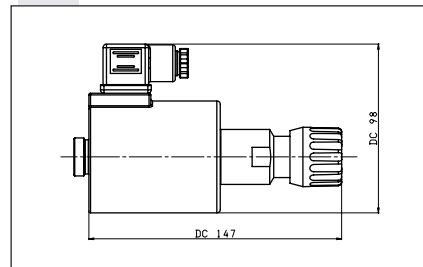
"A16" DC COILS FOR CETOP 5



VARIANT WITH MAN. EMERGENCY E1



VARIANT WITH ROT. EMERGENCY P1



1

Type of protection (in relation to the connector used)	IP 65
Number of cycles	18.000/h
Supply tolerance	±10%
Ambient temperature	-30°C ÷ 60°C
Duty cycle	100% ED
Insulation class	H
Weight	0,9 Kg

VOLTAGE (V)	MAX. WINDING TEMPERATURE (AMBIENT TEMPERATURE 25°C)	RATED POWER (W)	RESISTANCE AT 20°C (OHM) ±7%
12V	106°C	45	3.2
24V	113°C	45	12,4
48V*	-	45	-
102V*	-	45	-
110V*	118°C	45	268
205V*	-	45	-

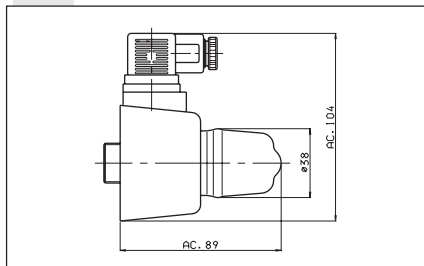
(*) Special voltage ETA16 - 03/2002/e



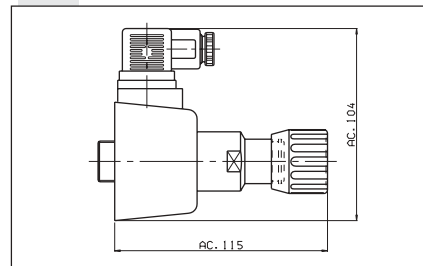
"K16" AC SOLENOIDS FOR CETOP 5



E1 VARIANT WITH MAN. EMERGENCY



P1 VARIANT WITH ROT. EMERGENCY



Type of protection (in relation to the connector used)	IP 66
Number of cycles	18.000/h
Supply tolerance	+10% / -10%
Ambient temperature	-54°C ÷ 60°C
Duty cycle	100% ED
Max. pressure static	210 bar
Insulation class	H
Weight	0,8 Kg

VOLTAGE (V)	MAX. WINDING TEMPERATURE (AMBIENT TEMPERATURE 25°C)	RATED POWER (VA)	IN RUSH CURRENT (VA)	RESISTANCE AT 20°C (OHM) ±10%
24V/50Hz	134°C	124	454	0.56
24V/60Hz*	115°C	103.5	440	0.55
48V/50Hz*	134°C	113	453	2.10
115V/50Hz-120V/60Hz	121°C - 138°C	-	-	10.8
230V/50Hz-240V/60Hz	121°C - 138°C	-	-	43.0
240V/50Hz*	134°C	120	456	47.39

* Special voltage ETK16 - 01/2000/e