

Center Hole CYLINDERS RH SERIES

30-200 Ton Double-Acting,

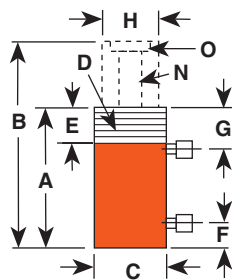
Ideal for pulling and
tensioning of cables, anchor
bolts, forcing screws.

CYLINDERS

- Interchangeable piston head inserts (see page 41) provide versatility of application.
- Built-in safety feature prevents over-pressurization of the retract circuit.
- Plated piston rod resists wear; superior packings provide high cycle life without leakage.
- Corrosion-resistant standpipe has "Power Tech" treatment (see page 8).
- Each cylinder has 9796 3/8" NPTF female half couplers. The 60 ton thru 200 ton steel models are equipped with removable carrying handles.



ASME B30.1
10,000 PSI



30, 60, 100 Ton
Double-Acting Models Feature
Threaded Collar

Cyl. Cap. (tons)	Stroke (in.)	Order No.	Oil Cap. (cu.in.)		A Re-tracted Height (in.)	B Ex-tended Height (in.)	C Outside Dia. (in.)	D Collar Thread (in.)	E Collar Thread Length (in.)	F Base Port (in.)	G Top Port (in.)	H Rod Dia. (in.)	N Center Hole Dia. (in.)	Insert Thread Size (in.)	Mounting Holes and Bolt Circle (in.)	Cylinder Effective Area (sq.in.)		Internal Pressure at Cap. (psi)		Tons at 10,000 psi (in.)		Prod. Wt (lbs.)	
			Push	Pull												Push	Pull	Push	Pull	Push	Pull		
30	15	3	RH303	17.6	10.2	7 ¹ / ₁₆	10 ¹ / ₁₆	4 ³ / ₄	None	None	1	1 ⁵ / ₈	2 ¹ / ₂	1 ⁹ / ₃₂	2-12	3/8-16x3 ⁵ / ₈	5.89	3.38	10,200	8,876	29.5	16.9	29.8
30	15	6	RH306D	35.34	20.28	11 ¹ / ₁₆	17 ¹ / ₁₆	4 ³ / ₄	None	None	1	1 ⁵ / ₈	2 ¹ / ₂	1 ¹⁷ / ₆₄	2-12	7/16-20x3 ⁵ / ₈	5.89	3.38	10,200	8,876	29.5	16.9	45
30	20	10 ¹ / ₈	RH3010	66	41	17 ¹ / ₄	27 ³ / ₈	4 ¹ / ₂	4 ¹ / ₂ -12	1 ⁵ / ₈	1 ³ / ₄	3 ³ / ₁₆	2 ³ / ₈	1 ⁵ / ₁₆	17/8-16	None	6.54	4.04	9,174	9,901	32.7	20.2	61
60	25	4	RHA604D	49.2	20.6	9 ¹ / ₂	13 ¹ / ₂	7	None	None	1 ⁹ / ₁₆	2 ¹ / ₄	4	2 ¹ / ₈	3-12	1/2-13x5 ¹ / ₈	12.31	5.15	9,750	9,709	61.5	27.7	35.6
60	25	5	RH605*	61.55	25.77	9 ¹ / ₂	14 ¹ / ₂	6 ¹⁷ / ₃₂	None	None	1	1 ³ / ₄	4	2 ¹ / ₈	3-12	1/2-13x5 ¹ / ₈	12.31	5.15	9,750	9,709	61.5	27.7	73
60	40	10 ¹ / ₈	RH6010*	133	87	18 ¹ / ₁₆	28 ³ / ₁₆	6 ¹ / ₄	6 ¹ / ₄ -12	1 ⁷ / ₈	2 ¹ / ₈	3 ⁷ / ₃₂	3 ³ / ₈	2 ¹ / ₈	3-16	None	13.14	8.59	9,132	9,313	65.7	42.9	120
100	45	1 ¹ / ₂	RH1001*	32.1	14.2	6 ¹ / ₂	8	8 ³ / ₈	None	None	1 ¹ / ₄	2 ⁵ / ₁₆	5	3 ³ / ₆₄	4-16	5/8-11x7	21.39	9.43	9,350	9,544	106.9	47.1	85
100	50	6	RH1006*	120.2	65.6	12 ³ / ₈	18 ³ / ₈	7 ¹ / ₄	None	None	1 ¹⁵ / ₃₂	2 ²¹ / ₆₄	4 ³ / ₈	2 ¹ / ₁₆	None	1/2-13x5 ¹ / ₂	20.03	10.93	9,986	9,150	100.1	54.7	95
NEW	100	45	10 ¹ / ₈	RHA1008D	Contact factory for details and availability																		
100	45	10 ¹ / ₈	RH10010*	216.6	95.5	19 ¹ / ₂	29 ⁵ / ₈	8 ¹ / ₂	8 ¹ / ₂ -12	2 ¹ / ₄	2 ¹ / ₂	3 ³⁹ / ₆₄	5 ¹ / ₂	3 ⁹ / ₆₄	4 ¹ / ₂ -12	None	21.39	9.43	9,350	9,544	106.9	47.1	240
150	70	5	RH1505*	150.9	73.6	12 ¹ / ₄ †	17 ¹ / ₄	8 ¹ / ₂	None	None	1 ¹⁵ / ₃₂	2 ¹¹ / ₁₆	5 ¹ / ₂	2 ⁹ / ₁₆	None	None	30.1	14.7	9,937	9,524	150.9	73.6	148
150	75	8	RH1508*	239.6	127.2	13 ³ / ₄	21 ³ / ₄	9 ³ / ₄	None	None	1 ³⁵ / ₆₄	2 ¹³ / ₃₂	6	3 ³ / ₃₂	5-12	None	29.95	15.9	10,015	9,434	149.8	79.5	227
NEW	150	75	8	RHA1508D*	Contact factory for details and availability																		
200	75	8	RH2008*	323.6	127.6	16 ¹ / ₁₆	24 ¹ / ₁₆	10 ³ / ₄	None	None	2 ¹ / ₄	3 ⁷ / ₃₂	7 ¹ / ₂	4 ¹ / ₁₆	6-12	1 ¹ / ₄ -7 x 7 ¹ / ₄	40.45	15.95	9,888	9,404	202.3	79.8	311
NEW	200	75	8	RHA2008D*	Contact factory for details and availability																		

* Supplied with carrying handles.

† Measured with 3/4" high serrated insert installed.

See pages 36-41 & 120-133 for hydraulic accessories.

Aluminum

CYLINDER/PUMP MATCHING

ACCESSORY/REPAIR

PUMP/CYLINDER SETS

HYDRAULIC ACCESSORIES

VALVES

TECH DATA

Page 6

Page 36

Page 61

Page 120

Page 129

Page 237