

Model Shown:
RC7402L, RC9656L

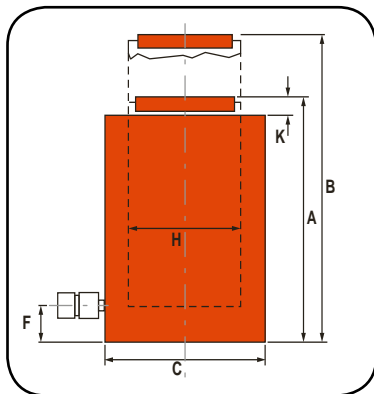


► Features

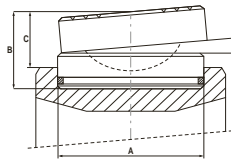
POSITIVE MECHANICAL LOCK TO SUPPORT LOAD.

- Supports lifted load for extended periods of time with hydraulic pressure released.
- All cylinders feature coated pistons to resist corrosion and abrasion.
- Visible indicator band alerts when stroke limit is reached. Overflow port (weep hole) stroke limiter prevents piston from being overextended.

► Technical Dimensions



Optional Swivel Load Caps Ordering Info



Reduce the effects of off-center loading. Tilt up to 5 degrees. Radial grooves on top of cap reduce load slippage. Notch across face of each cap helps keep loads having a round shaped center.

Used with Cylinder	Swivel Cap Order No.	Wt. (kg)	A (mm)	B (mm)	C (mm)
RC740_L, RC965_L	2000824	72,0	289,6	139,7	99,1
RC1220_L	2000825	113,0	322,6	175,3	124,5

► Ordering Information

Cyl. Cap. (ton)	Stroke (mm)	Order No.	Oil Cap. (cm ³)	A	B	C	F	K	L	Piston Thread Dia. (mm)	Cylinder Effective Area (cm ²)	Metric Tons at 700 (bar)	Prod. Wt. (kg)
				Retracted Height (mm)	Extended Height (mm)	Outside Dia. (mm)	Base to Port (mm)	Bore Dia. (mm)	Piston Rod Protrusion (mm)				
740	50,8	RC7402L	4811	12,0	14,0	16,9	2,6	13,8	0,2	TR350 X 6	962,0	673,5	545
	152,4	RC7406L	14432	16,5	22,4	16,9	2,6	13,8	0,2	TR350 X 6	962,0	673,5	683
	254,0	RC74010L	24053	21,1	30,9	16,9	2,6	13,8	0,2	TR350 X 6	962,0	673,5	821
965	50,8	RC9652L	6280	12,8	14,8	19,3	2,8	15,7	0,2	TR400 X 6	1256,6	879,7	714
	152,4	RC9656L	18849	17,3	23,2	19,3	2,8	15,7	0,2	TR400 X 6	1256,6	879,7	990
	254,0	RC96510L	31400	21,9	31,7	19,3	2,8	15,7	0,2	TR400 X 6	1256,6	879,7	1170
1220	50,8	RC12202L	7949	13,4	15,4	21,7	3,1	17,7	0,2	TR450 X 6	1590,4	1113,3	969
	152,4	RC12206L	23857	19,1	25,0	21,7	3,1	17,7	0,2	TR450 X 6	1590,4	1113,3	1310
	254,0	RC122010L	39741	23,6	33,5	21,7	3,1	17,7	0,2	TR450 X 6	1590,4	1113,3	1530