

# Shop Press H FRAME

## 10 Tons Bench/Floor Press

SHOP EQUIPMENT

- Ideal for small pressing jobs; repairing small motors, armatures, removing and installing gears, bearings, other press-fit parts.
- Bench press has 15<sup>3/8</sup>" x 18" work area; floor press bed height is adjustable from 5" to 41" with horizontal "daylight" of 21".
- Choices of power sources: single-speed hand pump, electric/hydraulic or air/hydraulic.
- Hydraulic gauges, hoses and fittings included.

### PUMP ELECTRICAL SPECIFICATIONS

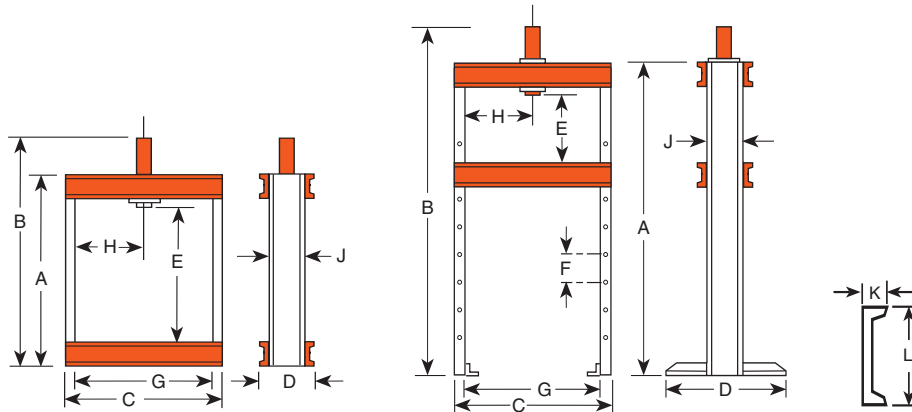
PE10 Series – 1/4 hp, 115 volt, 60 cycle, single phase. Also available in 230 volt, 50 cycle, add suffix "-220" to order number.



SP1010A



SPM1010



### DIMENSIONS

Frame	A (in)	B (in.)	C (in.)	D (in.)	E (in.)	F (in.)	G (in.)	H (in.)	J (in.)	K (in.)	L (in.)	Bench Space (in.)	Floor Space (in.)
<b>Bench</b>	24 <sup>1/2</sup>	33 <sup>3/8</sup>	25 <sup>1/4</sup>	7 <sup>3/16</sup>	15 <sup>3/8</sup>	—	22	11	4	1 <sup>9/16</sup>	4	7 <sup>3/16</sup> x 25 <sup>1/4</sup>	—
<b>Floor</b>	59	67 <sup>5/8</sup>	25 <sup>1/4</sup>	28	5-41	6	22	2 <sup>1/2</sup> -18 <sup>1/2</sup> *	4	1 <sup>9/16</sup>	4	—	28 x 28 <sup>1/4</sup>

\*Lateral head movement

### ORDERING INFORMATION

Frame	Cap. (tons)	Type of Cyl. Used	Stroke	Cylinder Model	Order No.	Speed (in./min.)†††	Type Pump	Pump Model †	Prod. Wt. (lbs.)
222481 Bench	10	Single-Acting	10 <sup>1/8</sup> "	C1010C	<b>SPM1010</b>	.06 in./stroke	Hand	P55	91
222480 Floor	10	Single-Acting	10 <sup>1/8</sup> "	C1010C	<b>SPH1010</b>	.06 in./stroke	Hand	P55	171
222480 Floor	10	Single-Acting	10 <sup>1/8</sup> "	C1010C	<b>SPE1010</b>	0.2    2.2	Elec. ††	PE102	175
222480 Floor	10	Single-Acting	10 <sup>1/8</sup> "	C1010C	<b>SP1010A</b>	0.3    3.7	Air	PA9H	162
222480 Floor	10	Double-Acting	10"	RD1010	<b>SPE1010D</b>	0.2    2.2	Elec. ††	PE104	192

† Optional air/hydraulic pumps available on request.

†† "Advance" position holds pressure with motor shut off. "Return" position advances cylinder with motor running and returns cylinder with motor shut off.

††† Typical performance based on 100 psi and 10,000 psi pump specifications. Actual speeds may vary with operating conditions.

PRESS ACCESSORIES

Page 144-145