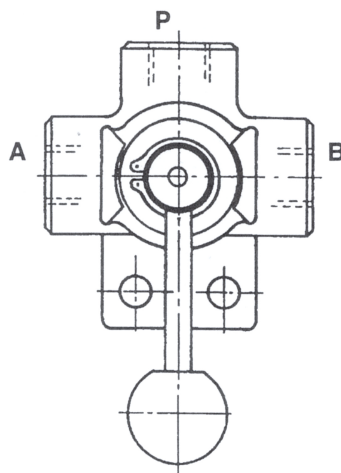


Altri circuiti a richiesta
Other circuits on request







Applicazioni

I deviatori di flusso modello 73001 offrono la possibilità di deviare in modo semplice ed economico un circuito idraulico. Si consiglia di manovrare il deviatore in assenza di pressione.

Application

The Model 73001, Two-Position Selector Valve is a 3 way hydraulic selector offering a simple method of directing the flow of oil in a hydraulic system to two separate hydraulic lines.

The hydraulic circuit which is to be operated should be selected before pressure is applied.

Portata max libera Max free flow		l/min (gal/min)	38+60 (10+15,9)
Pressione massima * Max pressure		bar (psi)	250 (3575)
Temperature di impiego Temperature range		°C	-25 / +80
Filtrazione assoluta Filtration absolute		μ	25

1 bar=14,3 psi

1 gal/min=3,78 l/min

* 330 bar (4719 psi) nella versione alta pressione
330 bar (4719 psi) in high pressure version