

## "C" CLAMPS

5, 10 & 25 TONS

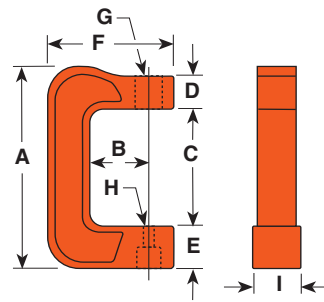


CC10

- In 5, 10 and 25 ton capacities. For use with Power Team general purpose single-acting series cylinders of comparable capacity.
- For clamping, pressing and bending. Ideal for welding and metal fabrication for fit-up of sheet or plate steel.
- Clamps withstand full rated capacity of the cylinders for which they are intended.
- To minimize the effects of off-center loading, the CC5, CC10 and CC25 should be used with the optional 350144 and 350145 swivel caps.

## C-Clamps HYDRAULIC

### Accessories



Items pictured  
at left are:  
**CC10**  
**C104C**  
**201923**

HYDRAULIC TOOLS

Cap. (tons)	Order Number (C-Clamp only)	Use With Cyl. No.	A (in.)	B (in.)	C (in.)	D (in.)	E (in.)	F (in.)	G (in.)	H (in.)	I (in.)	Weight (lb.)
5	<b>CC5</b>	C51C-C57C	12 <sup>3</sup> / <sub>8</sub>	3 <sup>3</sup> / <sub>4</sub>	7 <sup>9</sup> / <sub>16</sub>	2	2 <sup>1</sup> / <sub>2</sub>	7 <sup>3</sup> / <sub>4</sub>	1 <sup>1</sup> / <sub>2</sub> "-16 UN	7 <sup>7</sup> / <sub>8</sub>	3	25
10	<b>CC10</b>	C101C-C1010C	15 <sup>7</sup> / <sub>8</sub>	6	9 <sup>13</sup> / <sub>16</sub>	2	3	10 <sup>3</sup> / <sub>4</sub>	2 <sup>1</sup> / <sub>4</sub> "-14 UNS	7 <sup>7</sup> / <sub>8</sub>	3 <sup>3</sup> / <sub>2</sub>	50
25	<b>CC25</b>	C251C-C2514C	21	6	13	3	4	12 <sup>5</sup> / <sub>16</sub>	3 <sup>5</sup> / <sub>16</sub> "-12 UNS	1 <sup>7</sup> / <sub>16</sub>	4 <sup>5</sup> / <sub>8</sub>	65

### OPTIONAL ACCESSORIES FOR USE WITH CC5, CC10 & CC25 HYDRAULIC CLAMPS

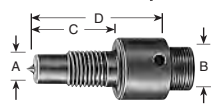
#### Swivel Caps



5/10 ton  
350144\*  
A-1<sup>3</sup>/<sub>8</sub>"  
B-3<sup>3</sup>/<sub>4</sub>"

25 ton  
350145  
A-2"  
B-1"

#### Threaded Adapters



10 ton  
38597  
A-1 - 8  
B-1 - 8  
C-3<sup>3</sup>/<sub>4</sub>"  
D-2"

25 ton  
38953  
A-1<sup>1</sup>/<sub>4</sub>-7  
B-1<sup>1</sup>/<sub>2</sub>-16  
C-2<sup>3</sup>/<sub>4</sub>"  
D-4<sup>3</sup>/<sub>8</sub>"

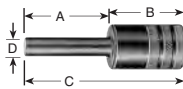
#### Pushing Adapters



10 ton  
28228\*\*  
A-2<sup>3</sup>/<sub>8</sub>"  
B-1 - 8  
C-1<sup>1</sup>/<sub>2</sub>"

25 ton  
28229\*\*  
A-2<sup>1</sup>/<sub>8</sub>"  
B-1<sup>1</sup>/<sub>4</sub>-7  
C-1<sup>3</sup>/<sub>4</sub>"

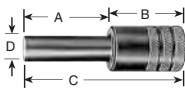
#### Pushing Adapters



10 ton  
201923\*\*  
A-3<sup>1</sup>/<sub>8</sub>"  
B-2<sup>1</sup>/<sub>4</sub>"  
C-5<sup>3</sup>/<sub>8</sub>"  
D-1<sup>1</sup>/<sub>2</sub>"  
E-1 - 8

25 ton  
34510\*\*  
A-3<sup>1</sup>/<sub>4</sub>"  
B-2<sup>5</sup>/<sub>8</sub>"  
C-5<sup>1</sup>/<sub>8</sub>"  
D-3<sup>3</sup>/<sub>4</sub>"  
E-1<sup>1</sup>/<sub>4</sub>-7

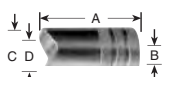
#### Pushing Adapters



10 ton  
201454\*\*  
A-3<sup>1</sup>/<sub>8</sub>"  
B-2<sup>5</sup>/<sub>8</sub>"  
C-5<sup>1</sup>/<sub>16</sub>"  
D-3<sup>3</sup>/<sub>4</sub>"  
E-1 - 8

25 ton  
34511\*\*  
A-3<sup>1</sup>/<sub>4</sub>"  
B-2<sup>5</sup>/<sub>8</sub>"  
C-5<sup>7</sup>/<sub>8</sub>"  
D-1"  
E-1<sup>1</sup>/<sub>4</sub>-7

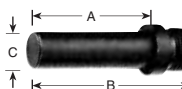
#### V Pushing Adapters



10 ton  
34806\*\*  
A-2<sup>5</sup>/<sub>8</sub>"  
B-1 - 8  
C-1<sup>1</sup>/<sub>2</sub>"  
D-1"

25 ton  
34807\*\*  
A-3<sup>1</sup>/<sub>8</sub>"  
B-1<sup>1</sup>/<sub>4</sub>-7  
C-1<sup>3</sup>/<sub>4</sub>"  
D-1<sup>1</sup>/<sub>4</sub>"

#### Pushing Adapters



5 ton  
309874\*  
A-2<sup>1</sup>/<sub>32</sub>"  
B-2<sup>25</sup>/<sub>32</sub>"  
C-3<sup>3</sup>/<sub>8</sub>"

\* May be used with CC5  
\*\* Must be used with a threaded adapter.