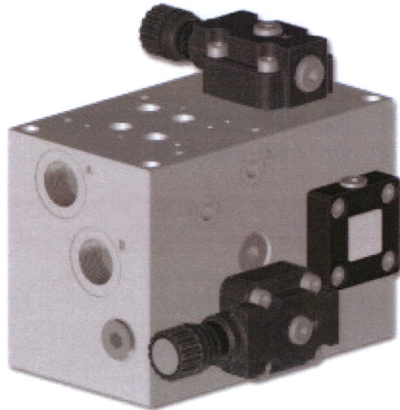


Products » Hydraulic blocks and systems » **BA.200.U*.C.***

BA.200.U*.C.*

Low / high pressure unit 200 L/min

Technical informations

The low / high pressure units are usually employed for hydraulic systems fed by dual pumps that form a single pressure circuit. The main feature of this system consists in being able to set a pressure value in correspondence of which one of the two pumping sections is changed over to drain. The unit is fitted with an adjustable pressure relief valve to protect the hydraulic system. Two pressure adjustment ranges are available for the exclusion valve while the pressure relief valve is available with 3 adjustment ranges.

- » Maximum flow 200 Lt/min.
- » Maximum pressure 320 Bar.
- » Fluid viscosity 10÷500 mm²/s
- » Fluid temperature 0÷75°C.
- » Ambient temperature -25÷60°C.
- » Max contamination level class 10 in compliance with NAS 1638 with filter β 75

Variants

- » None

Correlated products

- BA.130.U*.C.*
- BA.400.U*.C.*
- BA.60.U*.C.*
- BCA360XQP3
- BCA560XQP5
- MB099*00000
- MB113*00000
- MB145*00000
- MB164*00000
- MB282*00000
- MB421*00000
- MB545*00000
- MB825*00000