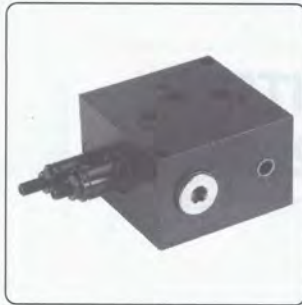


Low / High pressure units type BA.60...



Description

The low/high pressure groups are usually employed in hydraulic systems fed by dual pumps that form a single pressure circuit.

The main feature of this system consists in being able to set a pressure value in correspondence of which one of the two pumping sections is changed over to drain.

These groups are fitted with an adjustable maximum pressure valve to protect the hydraulic system.

Specifications

Max. operating pressure	320 bar
Max. flow	60 l/min
Fluid viscosity	10 ÷ 500 mm ² /s
Fluid temperature	0°C ÷ 75°C
Ambient temperature	-25°C ÷ 60°C
Max. contamination level	class 10 in accordance with NAS 1638 with filter $\beta_{25} \geq 75$.
Weight	6,6 Kg

are available for the exclusion valve, which is fitted with a cast iron or steel seat, and the maximum pressure valve type CMP.10 is also available with 3 adjustment ranges. The basic arrangement fitted with both bottom and lateral P and T ports may be fitted with various modules for a variety of applications.

For the minimum permissible setting pressure depending on the spring, see minimum setting pressure curve CMP.10 (tech. cat. K02T/96 page 153)

In the series connection the last connector block above should only be connected in parallel (BC.06.30) for CETOP3/NG06 modular components

Ordering code

- BA** Low/high pressure base
- 60** Capacity (l/min)
- U*** Double pump exclusion valve setting
2 = max. 30 bar
3 = max. 70 bar
4 = max. 100 bar
- *** **G** = retaining valve seal on steel (omit if not required)
- C** Type of adjustment
Grub screw
- *** Max. pressure valve setting
1 = max 50 bar
2 = max 150 bar
3 = max 320 bar
- **** Variants:
00 = No variant
V1 = Viton
- 1** Serial No.

The series connection modular blocks (BC.06.32 / BC.5.32) or the parallel connection types (BC.06.40/BC.5.40) and the solenoid valve should be ordered separately.

For the modular sub-base ordering codes see tech. cat. B01T/96, page 197 and B02T/96, page 207; for the valve ordering code see tech. cat. D01T/96, page 11 and D02T/96, page 27.

The CETOP 3/NG06 blocks are fitted with 2 tie rods, while the CETOP 5/NG10 types have 3 tie rods.

BC.10.06 = Reduction plate to be used only for mounting modular blocks type CETOP 3/NG06.

Module ordering code

- BA** Subplate mounting
- **** **06** = CETOP3/NG06
10 = CETOP5/NG10
- **** Type of module:
62 = side CETOP interface
66 = upper CETOP interface
68 = with upper threaded connectors
- **** Variants:
00 = No variant
V1 = Viton
- 1** Serial No.

Overall dimensions and hydraulic symbol

